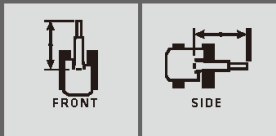
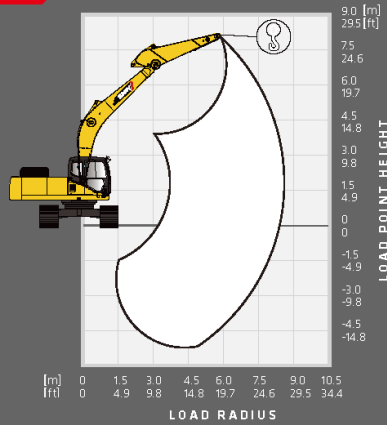


SY265C || LIFTING PERFORMANCE

Standard 5900 mm (19' 4") Boom
 Standard 2950 mm (9' 8") Arm
 Standard 800 mm (31") Track Shoes
 No Bucket



Ratings are based on ISO 10567:2007. Lift capacity does not exceed 75% of tipping load with the machine on firm, level ground or 87% of hydraulic lifting capacity.



BLADE DOWN

LOAD RADIUS	3.0 m 10.0 ft		4.5 m 15.0 ft		6.0 m 20.0 ft		7.5 m 25.0 ft		MAX REACH	
LOAD POINT HEIGHT										
7.5 m 25.0 ft					5981 kg* 13,186 lb*	5981 kg* 13,186 lb*			6000 kg* 13,228 lb*	6000 kg* 13,228 lb*
6.0 m 9.8 ft					6083 kg* 13,411 lb*	6083 kg* 13,411 lb*	5775 kg 12,732 lb	5673 kg 12,507 lb	5670 kg* 12,500 lb*	5640 kg* 12,434 lb*
4.5 m 15.0 ft					6242 kg* 13,761 lb*	6242 kg* 13,761 lb*	5838 kg 12,870 lb	5682 kg 12,527 lb	5665 kg 12,489 lb	5010 kg 11,045 lb
3.0 m 10.0 ft			9459 kg* 20,853 lb*	9459 kg* 20,853 lb*	7856 kg 17,319 lb	7502 kg 16,539 lb	6724 kg 14,824 lb	5385 kg 11,872 lb	6121 kg 13,494 lb	4621 kg 10,187 lb
1.5 m 5.0 ft			11713 kg 25,822 lb	10834 kg 23,885 lb	8870 kg 19,555 lb	7118 kg 15,692 lb	7037 kg 15,514 lb	5191 kg 11,444 lb	5949 kg 13,115 lb	4429 kg 9,764 lb
0 m 0 ft			12789 kg 28,195 lb	10477 kg 23,098 lb	9541 kg 21,034 lb	6859 kg 15,121 lb	6892 kg 15,194 lb	5049 kg 11,131 lb	6114 kg 13,479 lb	4527 kg 9,980 lb
-1.5 m -5.0 ft	11091 kg* 24,451 lb*	11091 kg* 24,451 lb*	13080 kg 28,836 lb	10367 kg 22,855 lb	9574 kg 21,107 lb	6879 kg 15,165 lb	6953 kg 15,329 lb	5108 kg 11,261 lb	6703 kg 14,777 lb	4982 kg 10,983 lb
-3.0 m -10.0 ft	17705 kg* 39,032 lb*	17705 kg* 39,032 lb*	12543 kg 27,652 lb	10457 kg 23,054 lb	9339 kg 20,589 lb	6924 kg 15,265 lb			7931 kg 17,485 lb	5867 kg 12,934 lb
-4.5 m -15.0 ft	15261 kg* 33,644 lb*	15261 kg* 33,644 lb*	10814 kg 23,841 lb	10766 kg 23,735 lb					8623 kg 19,010 lb	8065 kg 17,780 lb

* Indicates load limited by hydraulic lifting capacity
 In the interest of continual equipment development, SANY Canada reserves the right to change these specifications at any time without prior notification.

SY265C

PRODUCT SPECIFICATIONS



STANDARD FEATURES

- Powerful, robust and reliable powertrain & hydraulic components for long life in the most demanding applications
 - A high-performance cooling system equipped with electronic control fan clutch provides clean, quiet operation
 - Optimized positive flow control hydraulics improve operating efficiency by up to 5% and fuel efficiency by up to 10%
 - Selectable working modes match machine performance to the application, maximizing productivity and minimizing operating costs
- **Gross Power**
145 kW / 194.4 hp
 - **Dig Depth**
6706 mm / 22' 0"
 - **Operating Weight**
27000 kg / 59,525 lb
 - **Bucket Breakout**
187.0 kN / 42,039 lbf