

**SANY**<sup>®</sup>

# SPECIFICATION



80t



50.5m



76m

# STC800C5

SANY TRUCK CRANE

QUALITY CHANGES THE WORLD

[crane.sanyglobal.com](http://crane.sanyglobal.com)

RHD  
右舵可售

V1.4

It is one of the core business units in SANY Group, specializing in the development and manufacturing of high-end wheel cranes, crawler cranes and tower cranes, including the complete range of wheel cranes from 8 to 2400t, crawler cranes from 25 to 4500t and tower cranes from 6 to 185t.

三一集团旗下核心事业部，从事高端轮式起重机、履带起重机、塔式起重机系列产品的研发制造。覆盖8-2400吨全吨位轮式起重机，25-4500吨全吨位履带起重机，6-185吨塔式起重机。



SANY CRANE





Five section large cross section boom, full extension length 50.5m at 44m radius, 16m bi-fold jib available. The lifting performance leads in industry.

5节大截面主臂,全伸臂长50.5m,吊载幅度达44m,配备16m折叠副臂,吊载能力行业领先。

## SANY TRUCK CRANE STC800C5 / 80T LIFTING CAPACITY



Outriggers extend to 8m in full span, making lifting operation more stable. Newly developed half extension mechanism makes the crane more adaptable to work at constricted area.

横向支腿跨距增至8m,吊载更稳定。全新开发的半伸支腿系统,更适用于狭窄空间作业。



Fixed CW 3.2t, movable CW 8.8t. Additional 6t CW for option. The crane can travel with 18t CW on board at low speed (<20km/h) in short distance.

CW assembly efficiency significantly increased via auto-lock after CW lifted to position.

固配3.2t,活动配重8.8t,可选一块6t配重,可带18t配重短距离低速(<20km/h)转场。

配重提升后油缸自动锁止,减少安装步骤和时间,效率大幅提升。

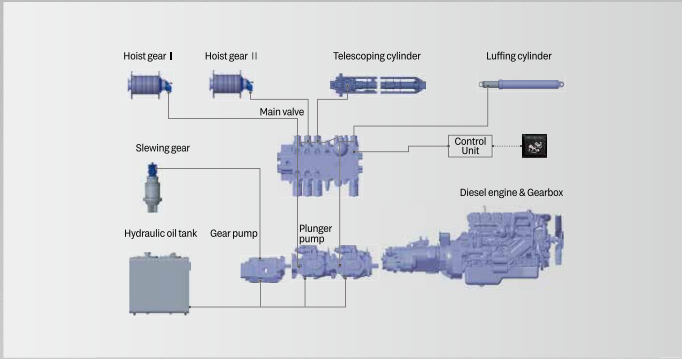




0-20° tiltable cab, relieving fatigue in long time operation.  
 Side step available, making getting in and out of the cab easier and safer.  
 45° tilted membrane buttons, easy to view and touch.  
 Six-outlet air conditioning, more comfortable.

操纵室最大变位角度 20°，长臂段、大角度工作颈椎无忧。  
 带踏板，进出方便安全。  
 45° 全新薄膜按键面板，触手可及，操作便捷。  
 6 通道立体通风，体感舒适。





All new double pump intelligent flow distribution system shared by all T-series models lifts combined motion stability by over 50%. High precision lifting work of mm-level with min. winch single rope speed < 1.5m/min, min. slewing stable speed <0.15°/s. Electrical control saves energy by 15% during loading, raises heavy load efficiency by 30%.

全新开发双泵智能流量分配系统,复合动作平稳性提升 50% 以上。卷扬单绳最低速度小于 1.5m/min,回转最低稳定速度小于 0.15°/s,轻松实现毫米级吊装。电控系统,上车吊载综合节能 15%,重载作业效率提升 30%。



G-class chassis, adaptable for multiple road conditions. Power train perfect combo of DF Cummins large torque engine and 10-speed manual transmission with emergency steering. Front axles equipped with big size disc brake, braking torque raised by 25%, less heat generated, making the brake system more reliable.

G 类底盘,通过性能好,双桥驱动。动力链黄金配比,东康大扭矩发动机,10 档手动带应急转向变速箱。前桥配置全新大尺寸盘式制动器,制动力矩加大 25%,发热少,更可靠。

## SANY TRUCK CRANE STC800C5 / 80T LIFTING CAPACITY



**MachineLink<sup>+</sup>**

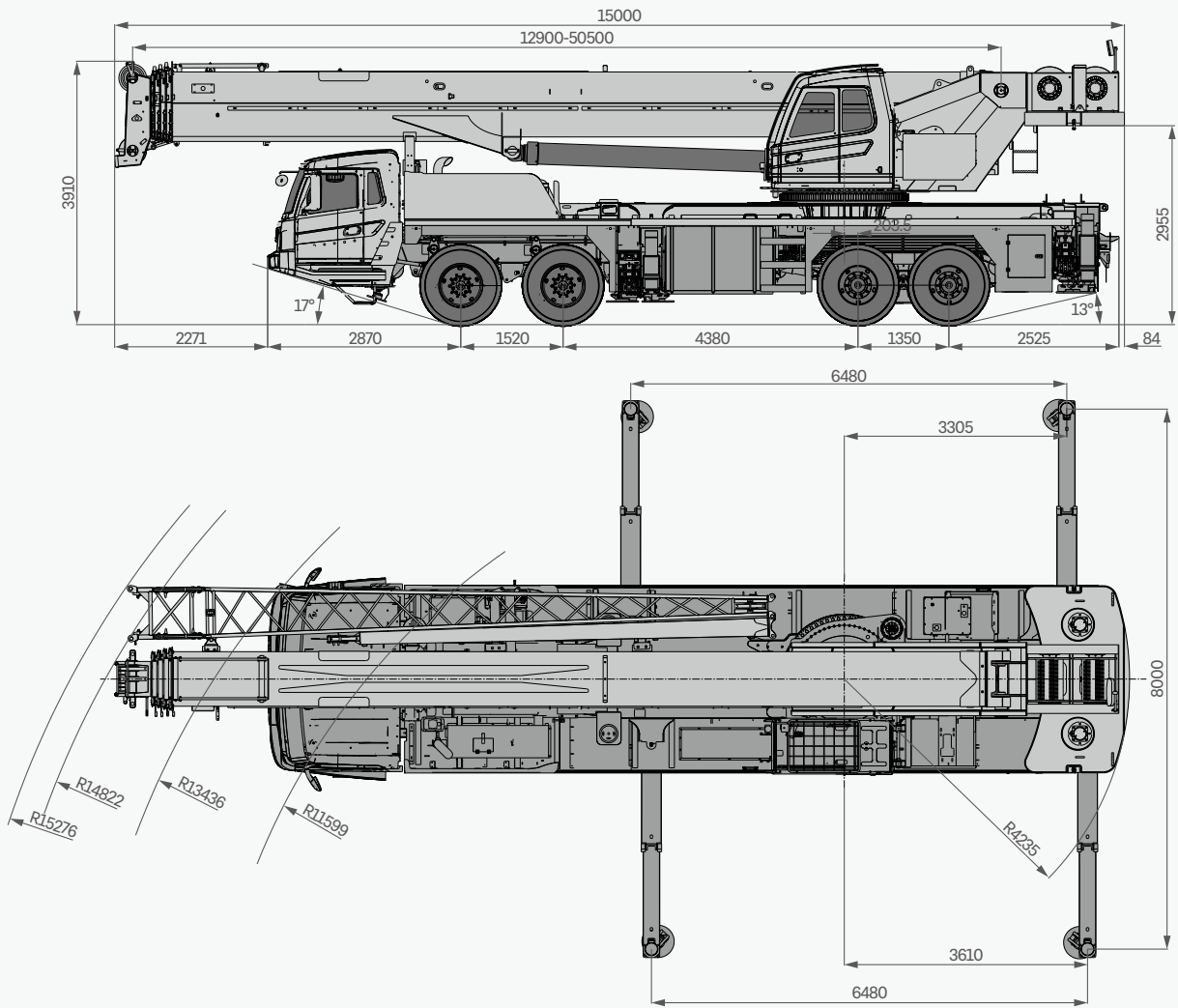
ROOTCLOUD T-AMS Pro device comes as standard to realize GPS trajectory, machine status, maintenance management, E-fence, alarm management, and operator management on computer or mobile MachineLink+ platform, by remote control of cranes. This telematics package greatly boosts efficiency of customer fleet management and helps provide better after-sales services.

标配树根物联终端 T-AMS Pro, 通过对起重机设备的远程控制, 在电脑或移动端 MachineLink+ 平台实现轨迹回放、设备状态、维保设备、电子围栏、报警管理、操作手管理等功能, 极大提高客户设备管理效率, 提升三一售后服务能力。



# Overall Dimensions

整机尺寸





# Technical Specification

## 整机参数

CATEGORY 类型	ITEM 项目	UNIT 单位	VALUE 参数	
CAPACITY 额定起重量	Max. lifting capacity 最大起重量	t	80	
WEIGHT 重量参数	Gross weight 整机总质量	kg	46000	
POWER 发动机参数 (下车)	Engine model 发动机型号 (排放标准)	-	DF CUMMINS ISLe375 30 (Euro III) 东风康明斯 ISLe375 30(欧 III)	
	Max. engine power 发动机最大功率	kW/rpm	275/2100	
	Max. engine torque 发动机最大输出扭矩	N·m/rpm	1550/1200	
DIMENSIONS 尺寸参数	Overall length 整机全长	mm	15000	
	Overall width 整机全宽	mm	2800	
	Overall height 整机全高	mm	3910	
TRAVEL 行驶参数	Max. travel speed 最高行驶速度	km/h	90	
	Steering radius 转弯半径	Min.steering radius 最小转弯半径	m	12
		Min.steering radius of boom tip 臂头最小转弯半径	m	15.4
	Wheel formula 车轮模式	-	8 × 4 × 4	
	Min.ground clearance 最小离地间隙	mm	316	
	Approach angle 接近角	°	17.2	
	Departure angle 离去角	°	12.9	
	Max.gradeability 最大爬坡度	-	44%	
	Fuel consumption per 100km 每 100 公里油耗	L	45	
	MAIN PERFORMANCE 主要性能参数	Working temperature range 使用温度区间	°C	-25~+45
Min.rated lifting radius 最小额定幅度		m	3	
Tail slewing radius 转台尾部回转半径		m	4.238	
Boom sections (Qty.) 臂节数		-	5	
Boom shape 臂形状		-	U shape U形	
Max.lifting moment 最大起重力矩		Basic boom 基本臂	kN·m	2940
		Full-extension boom 全伸主臂	kN·m	1685.5
		Full-extension boom + jib 全伸主臂 + 副臂	kN·m	608.5
Boom length 臂长		Basic boom 基本臂	m	12.9
		Full-extension boom 全伸主臂	m	50.5
		Full-extension boom + jib 全伸主臂 + 副臂	m	66.5
		Full-extension boom + boom extension + jib 全伸主臂 + 延伸臂 + 副臂	m	76
Max.lifting height 最大起重高度		Basic boom 基本臂	m	13.4
		Full-extension boom 全伸主臂	m	51
		Full-extension boom + jib 全伸主臂 + 副臂	m	66.5
		Full-extension boom + boom extension + jib 全伸主臂 + 延伸臂 + 副臂	m	76
Outrigger span (Longitudinal × Transverse) 支腿跨距 (纵 × 横)	m	6.48 × 8		
Jib offset 副臂安装角度	°	0, 15, 30		
AIRCONDITIONER 空调	In operator's cab 上车空调	-	Cooling 制冷	
	In driver's cab 下车空调	-	Heating & cooling 制冷、制热	

# Technical Specification

## 整机参数



### Axle Load 轴荷

Axle 轴	1	2	3	4	Gross weight 总重量
Axle load 轴荷 /t	10	10	13	13	46
Remark 备注	Main hook tied on the frame tail, aux. hook block placed in the bracket, with outrigger floats, spare tire, one person in driver's cab and full of water and oil. 主钩后置、副钩放钩桶，带支腿盘、带备胎、驾驶室1人，满水满油。				



### Hook 吊钩

Rated load 额载 /t	Number of sheaves 滑轮数量	Rope rate 倍率	Hook weight/kg 吊钩重量
60	6	12	550
6	0	1	120

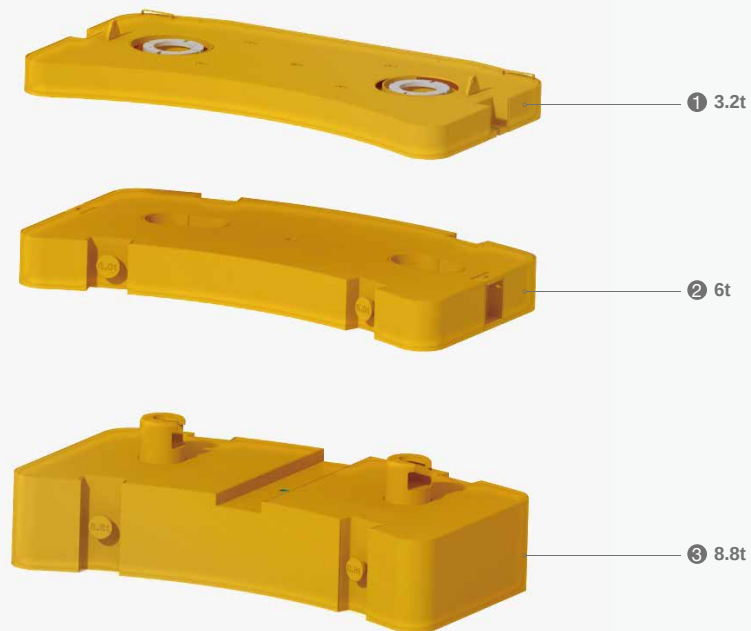


### Operations 主要动作参数

Item 项目	Max.single rope lifting speed (empty load) 单绳速度 (空载)	Rope diameter/length 钢丝绳直径 / 长度	Max. single line pull 最大单绳拉力
Main winch 主卷扬	130m/min	18mm/260m	6.67t
Auxiliary winch 副卷扬	130m/min	18mm/145m	6.67t
Slewing speed 回转速度	0-1.7r/min		
Full luffing up/down time of boom 主臂起落幅时间	60s/90s		
Full extension/retraction time of boom 主臂伸缩时间	100s/110s		
Outrigger jack 垂直支腿	Retraction 收	35s	
	Extension 放	35s	
Outrigger beam 水平支腿	Retraction 收	20s	
	Extension 放	25s	

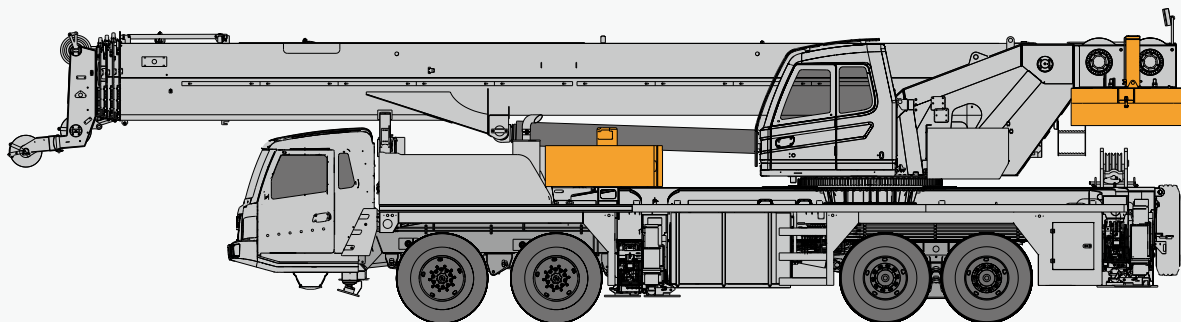
# Counterweight Combinations

配重组合



Total weight (t) 总重量	Combinations 组合
3.2	①
9.2	① + ②
12	① + ③
18	① + ② + ③

## Transport Solution 运输方案



3.2+6+8.8=18t

# Crane Introduction

## 整机介绍

### Driver's cab 驾驶室

- Self-developed integral steel structure cab in ergonomic design, featuring vibration and external noise isolation.
- The cab is furnished in concept of convenience, safety, and comfort with pneumatic seats, seat belt, adjustable steering wheel, large rearview mirror, seat with headrest, demister, AC, 7" multimedia terminal, standard berth, full set of controls and panels.
- 自主开发全宽钢整体式钢结构驾驶室，采用人体工程学原理设计，减震性和封闭性优良。
- 配备气动悬置的驾驶室与副驾座、三点安全带、可调整式的转向盘、大视野后视镜、配有头枕的舒适驾驶椅、防雾扇、空调、7寸多媒体娱乐终端等装备，控制仪器和仪表齐全。更加舒适、安全、人性化。

### Carrier frame 车架

- Designed and manufactured by Sany, the anti-torsional box structure welded from fine grain high strength steel plate, featuring increased bearing capacity.
- 三一设计、制造，由细晶粒高强度钢板焊接而成的防扭转箱形结构，承载能力强。

### Engine 发动机

- Model: DF Cummins Inline six-cylinder diesel engine with watercooler and inter cooler.
- Emission standard: Euro III.
- Fuel reservoir capacity: 400L.
- 型式：东风康明斯，直列六缸、水冷却、增压中冷、柴油发动机。
- 排放标准：欧 III。
- 燃料箱有效容积：400L。

### Transmission 变速箱

- 10-speed manual transmission with synchronizer, large speed ratio range, adaptable to slope climbing and high-speed traveling.
- 手动带同步器变速箱，10 档，速比范围大，既可满足低速场地爬坡行驶，又可满足高速行驶。

### Transmission shaft 传动轴

- Optimized layout, higher torque output via contrate gear connecting transmission shaft cardan.
- 优化的传动轴布置，传动轴传动平稳、可靠。最优化力传输，采用端面齿联结传动轴，传递扭矩大。

### Axle 车桥

- Axles 1, 2 are steered; axles 3, 4 are drive axles with built-in differential lock, realizing tougher ability to rough-terrain travelling. Two-stage reducer gear and smaller sized axle bags contribute to better trafficability. Press welding process strengthens the axle cover.
- 3、4 轴为驱动轴，1、2 轴为转向轴，驱动轴内置轴间和轮间差速锁，使车辆有更强的脱困能力；双级减速，桥包体积更小，使车辆有更好的通过性；冲焊桥壳工艺，承载能力更强。

### Suspension system 悬挂

- Front suspension is realized by independent leaf spring, and rear rubber. With leaf spring verified by 100,000 cycling fatigue tests, high strength and ride comfort are out of question.
- 前轴采用独立式钢板弹簧，中后轴采用橡胶悬架系统，板簧经过超过 10 万次的疲劳试验，保证强度的同时兼顾乘坐的舒适性。

### Steering 转向系统

- Mechanical steering mechanism, linkage feedback with hydro booster.
- 机械式转向机构，采用杆系反馈的液压助力转向系统。

### Tires 轮胎

- Radial tires sized 325/95R24, universal choice for heavy-duty trucks.
- 子午线轮胎，325/95R24，广泛适用于重型汽车，通用性强。

### Wheel formula 车轮模式

- 8 × 4 × 4.

### Outrigger 支腿

- H-type layout, four point support, easy to operate, outrigger beam hydraulically telescoping, jack telescoping protected by two-way pilot controlled valve.
- H 型支腿 4 点支撑，易操作、稳定性强；采用细晶粒高强度钢板材料，一、二级支腿全液压横向伸缩，支腿垂直油缸采用双向液压锁进行安全保护。

### Brake 制动系统

- The braking system includes service brake & parking brake & emergency brake & assisting brake.
- Service brake: air servo, dual circuit; front axle adopts key-operated brake + dual air chamber, delivering stronger braking performance.
- Parking brake: functioning at axles 3 and 4 by spring-loaded air chamber.
- Emergency brake: performed by accumulator releasing pressure.
- Assisting brake: engine exhaust brake, safety assured when driving down long slopes.
- 制动系统包括行车制动、驻车制动、应急制动和辅助制动。
- 行车制动采用双回路制动系统，所有车轮均用空气伺服制动器，前桥采用模式制动器 + 双气室，制动能力更强。
- 驻车制动是通过气室内弹簧作用在第三、四桥上。
- 应急制动阀由蓄能器储能断气制动兼做应急制动。
- 辅助制动为发动机缸内制动，保证在下长坡时的制动安全，保证行车的安全可靠。

### Electrical system 电气系统

- 2\*12V maintenance-free battery with a mechanical power switch, the overall power can be cut off manually. CAN instrument, data integration between superstructure and chassis.
- 2 × 12V 免维护蓄电池，配有机械式电源总开关，可手动切断整车电源；总线控制系统，可实现上下车信息交互。

# Crane Introduction

## 整机介绍

superstructure 上车

### Operator's cab 操纵室

- It adopts pressed and welded structure, equipped with safety glass, sun shade, outward opening door, joystick mounted on the control box in line with the principle of man-machine engineering. Corrosion-resistant FRP reinforced structure, fully covered softened interior, panoramic skylight, operator seat back tiltable and other use-friendly design, making the operation more comfortable and easy to operate. Touch screen of adjustable angle of view realizes multi-screen & multi-angle monitoring to ensure working safety and the one-click operation. The main control console is combined with the operation display system for convenient man-machine interaction. Cooling & heating A/C available.
- 采用冲压成型的全焊接结构，装有安全玻璃，车窗装有遮阳帘，外开式车门，操纵杆安装在操纵箱上，符合人机工程原理；防腐玻璃钢强化复合结构、全覆盖软化内饰、全景式天窗、操作手座椅靠背可倾斜定位等人性化设计，操作舒适、轻松；触摸式显示屏，视角可调节、多画面、多角度监控保证作业安全，满足一键式操作；主、塔臂及超起卷扬配备监视器，重点区域集中监视；主控台与操作显示系统有机结合，人机交互方便快捷；操纵室可向上倾斜 20°，满足高处的作业观察需要；配备冷暖空调。

### Boom & telescoping system 伸缩系统

- Five-section U shape boom welded by high strength structural steel, full-extension boom length of 50.5m, jib length of 16m, max. lifting height of boom+jib is 66.5m. Telescoping is realized by two cylinders with rope arranger.
- 五节臂，全伸臂长 50.5m，副臂 16.0m，带副臂最大起升高度 66.5m。由高强度焊接结构钢制成，U 形截面，双缸 + 绳排伸缩方式。

### Hoist 起升系统

- Efficient and energy saving speed regulation is realized via double variables of pump and motor. Winch balance valve coupled with exclusive anti-slip tech contribute to smoother hoisting.
- Normally closed winch brake and winch balance valve are set to prevent hook falling and stalling; Standard 6t and 60t hooks. The diameter of steel wire rope of main and auxiliary winch are 18mm, and the length are 260m and 145m respectively.
- 泵、马达双变量调速，高效节能。卷扬平衡阀与独特的防溜钩技术完美结合，重物起落平稳。
- 常闭式卷扬制动器，并设置卷扬平衡阀，可防止落钩失速；60t 主钩，6t 副钩，直径  $\phi 18\text{mm}$ ，长 260m 阻旋转钢丝绳（主），直径  $\phi 18\text{mm}$ ，长 145m 阻旋转钢丝绳（副）。

### Luffing system 变幅系统

- Passive luffing down with electro proportional balance valve, reducing energy cost. One luffing cylinder with hinge positioned to the front, making motion easier and boom stress optimized. Luffing angle:  $-1^{\circ} \sim 80^{\circ}$ .
- 自重落幅，更加节能。采用单根油缸，前较支布置，变幅更省力且起重臂受力得到改善；采用电比例控制平衡阀。变幅角度： $-1^{\circ} \sim 80^{\circ}$ 。

### Hydraulics 液压系统

- High quality oil pump, motor, valve and other key hydraulic components, to ensure the stability and reliability of the hydraulic system.
- Luffing and telescoping use open-type system of variable pressure level for different motions, realizing energy-efficient and safe control.
- Luffing mechanism with passive luffing, more energy efficient.
- Hoist winch system adopts closed system to avoid throttling loss, delivering higher efficiency.
- 采用高品质的油泵、马达、阀等关键液压元件，保证液压系统稳定、可靠。
- 变幅伸缩系统采用开式系统，具有四级压力选择功能，不同动作采用不同的压力等级，从而实现节能、安全的控制变幅和伸缩动作。
- 变幅机构采用自重落幅，更加节能。
- 起升卷扬系统采用闭式系统，避免节流损失，使系统具有较高的效率。

### Slewing 回转系统

- Stepless speed regulation. Close type system reduces energy loss. Emergency brake available.
- 带集成回转缓冲阀，具有自由滑转功能，回转启动和控制平稳，微动性卓越。

### Control system 控制系统

- Vehicle data display system: equipped with multiple sensors to give timely feedback of data information, achieving real-time monitoring of the vehicle working state.
- Man-machine interaction interface: more user-friendly interface with rich and clear information. Customers can set the vehicle controllability according to their personal operation habits and different operating conditions to fully meet the personalized needs of customers.
- 整车数据显示系统：配置丰富的传感器件，及时反馈数据信息，实现实时监控，确保随时掌控整车工作状态；
- 人机交互界面：人机交互界面设计人性化，信息丰富而清晰，客户可根据个人操作习惯和不同使用条件自行设置整车操控性，充分满足客户的个性化需求。

### Counterweight 配重

- Fixed and movable counterweight features 4 combinations: 3.2t, 9.2t, 12t, 18t, satisfying demand of various working conditions. CW assembly and disassembly controlled by remote device. This new crane can drive on jobsites at low speed with 12t CW on board.
- 组合式可变配重，3.2t、9.2t、12t、18t 共 4 种组合方式，可满足不同工况的需求，可带 12t 配重低速转场。最大限度发挥结构件性能，可遥控拆卸及安装，微动性好。

### Safety equipment 安全装置

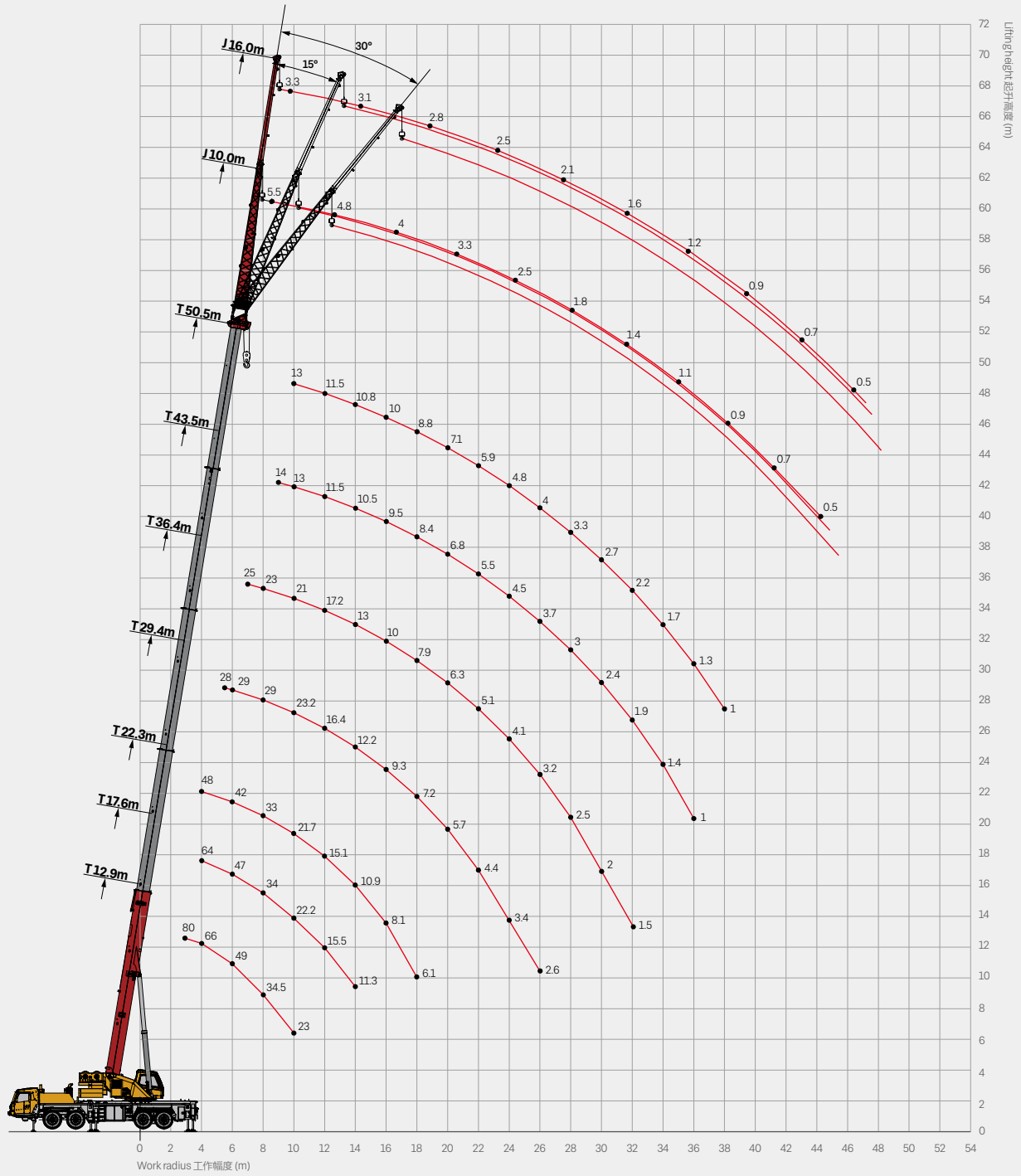
- The calculation system of load moment indicator based on lifting gravity model was established by analytical mechanics method. The lifting load accuracy reached  $\pm 3\%$  through online no-load calibration.
- The hydraulic system is equipped with hydraulic balance valve, overflow valve, two-way hydraulic lock, etc. to realize the stability and reliability of the hydraulic system.
- Height limit switch at head of boom and jib, preventing wire rope from over-hoist up.
- The boom end is equipped with anemometer to detect whether the wind speed at high altitude exceeds the allowable range of operation.
- The length & angle sensor and pressure sensor are equipped to display the operating status of the crane in real time, automatically cut off dangerous actions, and give a buzzer alarm.
- 采用分析力学方法，建立了基于吊重力学模型的力矩限制器计算系统，通过在线空载标定，吊重精度达到  $\pm 3\%$ 。
- 液压系统配置液压平衡阀、溢流阀、双向液压锁等元件，实现液压系统稳定可靠。
- 主、副臂臂端配置高度限位器，防止钢丝绳过卷。
- 臂端装有风速仪，检测高空风速是否超过可作业允许范围。
- 配置长度角度传感器、压力传感器，实时显示起重机作业状态，自动切断危险动作。

### Optional equipment at extra fees 选配

- One 6t CW block, outrigger pads.
- Special painting.
- Other equipment available upon request.
- 1 块 6 吨活动配重，支腿垫板。
- 特殊涂装。
- 其他配置视需求定。

# Operating Range

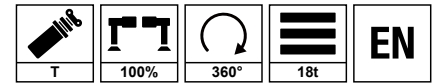
## 起升高度曲线



# Load Chart-Telescopic Boom

## 性能表 - 主臂

Unit: t



Radius (m) 幅度	12.9	20.0	27.0	34.1	41.1	17.6	24.7	31.7	38.8	45.8	22.3	29.4	36.4	43.5	50.5	Radius (m) 幅度
3	80.0					65.0										3
3.5	70.0	30.0				64.5										3.5
4	66.0	33.0				64.0					48.0					4
4.5	63.0	31.0				61.0	29.0				47.5					4.5
5	58.0	31.5	27.0			56.0	30.0				47.0					5
5.5	54.0	32.0	27.5			53.0	30.5				46.0	28.0				5.5
6	50.0	32.5	28.5	21.0		48.0	31.0	28.0			44.0	29.0				6
6.5	45.8	32.8	29.0	21.0		45.0	31.5	28.0			42.5	30.0				6.5
7	41.8	33.0	29.5	20.0		41.3	32.0	27.0			40.5	31.0	25.0			7
7.5	38.5	32.5	30.0	19.0		38.0	31.0	26.0	18.0		37.5	30.0	24.0			7.5
8	35.8	32.0	29.0	18.5	16.0	35.0	30.0	25.0	17.0		34.5	29.0	23.0			8
9	31.0	28.2	27.0	18.0	15.0	30.0	27.5	24.0	16.0	14.0	29.5	26.8	22.0	14.0		9
10	26.0	25.0	25.0	17.0	14.0	26.5	24.0	22.5	15.0	13.5	26.0	23.5	21.0	13.5	13.0	10
11		22.5	22.5	16.0	13.5	22.4	21.5	21.0	14.0	12.5	22.0	20.8	20.0	13.0	12.0	11
12		20.5	20.0	15.0	13.0	19.1	19.5	19.5	13.0	12.0	18.6	18.5	19.0	12.5	11.5	12
14		16.3	16.9	13.5	11.8	14.2	15.5	16.3	12.0	11.0	13.8	15.0	15.8	11.0	10.8	14
16		12.9	13.5	12.5	10.8		12.2	12.9	11.0	10.4	10.5	11.7	12.4	10.0	10.0	16
18			11.0	11.4	9.8		9.8	10.4	10.0	9.5	8.2	9.3	10.0	9.5	9.2	18
20			9.2	9.5	9.0		7.9	8.6	9.0	8.8		7.5	8.1	8.6	8.5	20
22			7.7	8.0	8.3		6.5	7.1	7.6	7.8		6.1	6.7	7.1	7.5	22
24			6.5	6.9	7.1			6.0	6.4	6.6		4.9	5.5	6.0	6.3	24
26				5.9	6.1			5.0	5.4	5.7		4.0	4.6	5.0	5.3	26
28				5.1	5.3			4.2	4.6	4.8			3.8	4.2	4.5	28
30				4.4	4.6				3.9	4.2			3.1	3.5	3.8	30
32					4.0				3.3	3.6			2.5	2.9	3.2	32
34					3.5				2.8	3.0				2.4	2.7	34
36					3.0					2.6				2.0	2.3	36
38					2.7					2.2				1.6	1.9	38
40										1.9				1.3	1.5	40
42										1.6					1.2	42
44															1.0	44
46																46
48																48
50																50
52																52
Rope rate 钢丝绳倍率	12	6	6	4	3	12	6	5	4	3	9	6	5	3	3	Rope rate 钢丝绳倍率
Cylinder I 一号缸	0	0%	0%	0%	0%	50%	50%	50%	50%	50%	100%	100%	100%	100%	100%	Cylinder I 一号缸
Cylinder II 二号缸	0	25%	50%	75%	100%	0%	25%	50%	75%	100%	0%	25%	50%	75%	100%	Cylinder II 二号缸

# Load Chart-Telescopic Boom

## 性能表 - 主臂

Unit: t



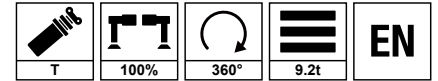
Radius (m) 幅度	12.9	20.0	27.0	34.1	41.1	17.6	24.7	31.7	38.8	45.8	22.3	29.4	36.4	43.5	50.5	Radius (m) 幅度
3	80.0															3
3.5	70.0	30.0														3.5
4	66.0	33.0				64.0					48.0					4
4.5	63.0	31.0				61.0	29.0				47.5					4.5
5	57.5	31.5	27.0			56.0	30.0				47.0					5
5.5	53.0	32.0	28.0			51.2	30.5				44.0	28.0				5.5
6	49.0	32.5	28.5	21.0		47.0	31.0	28.0			42.0	29.0				6
6.5	45.0	32.8	29.0	21.0		44.0	31.5	28.0			40.0	30.0				6.5
7	40.2	33.0	29.5	20.0		39.5	32.0	27.0			38.0	31.0	25.0			7
7.5	37.2	32.5	30.0	19.0		36.5	31.0	26.0	18.0		36.0	30.0	24.0			7.5
8	34.5	32.0	28.5	18.5	16.0	34.0	30.0	25.0	17.0		33.0	29.0	23.0			8
9	28.3	28.2	26.0	18.0	15.0	27.4	27.5	24.0	16.0	14.0	26.9	26.8	22.0	14.0		9
10	23.0	24.6	24.0	17.0	14.0	22.2	23.8	22.5	15.0	13.5	21.7	23.2	21.0	13.0	13.0	10
11		20.7	21.4	16.0	13.5	18.4	19.9	20.7	14.0	12.5	18.0	19.4	19.5	12.0	12.0	11
12		17.7	18.4	15.0	13.0	15.5	16.9	17.7	13.0	12.0	15.1	16.4	17.2	11.5	11.5	12
14		13.4	14.0	13.5	11.8	11.3	12.7	13.4	12.0	11.0	10.9	12.2	13.0	10.5	10.8	14
16		10.5	11.1	11.5	10.8		9.8	10.5	11.0	10.4	8.1	9.3	10.0	9.5	10.0	16
18			8.9	9.3	9.6		7.7	8.3	8.8	9.1	6.1	7.2	7.9	8.4	8.8	18
20			7.3	7.7	8.0		6.1	6.7	7.2	7.5		5.7	6.3	6.8	7.1	20
22			6.1	6.4	6.7		4.8	5.5	5.9	6.2		4.4	5.1	5.5	5.9	22
24			5.1	5.4	5.6			4.5	4.9	5.2		3.4	4.1	4.5	4.8	24
26				4.5	4.8			3.6	4.1	4.3		2.6	3.2	3.7	4.0	26
28				3.8	4.1			3.0	3.4	3.6			2.5	3.0	3.3	28
30				3.3	3.5				2.8	3.0			2.0	2.4	2.7	30
32					2.9				2.3	2.5			1.5	1.9	2.2	32
34					2.5				1.8	2.1				1.4	1.7	34
36					2.1					1.7				1.0	1.3	36
38					1.8					1.3					1.0	38
40										1.0						40
42																42
44																44
46																46
48																48
50																50
52																52
Rope rate 钢丝绳倍率	12	6	6	4	3	12	6	5	4	3	9	6	5	3	3	Rope rate 钢丝绳倍率
Cylinder I 一号缸	0	0%	0%	0%	0%	50%	50%	50%	50%	50%	100%	100%	100%	100%	100%	Cylinder I 一号缸
Cylinder II 二号缸	0	25%	50%	75%	100%	0%	25%	50%	75%	100%	0%	25%	50%	75%	100%	Cylinder II 二号缸



# Load Chart-Telescopic Boom

## 性能表 - 主臂

Unit: t



Radius (m) 幅度	12.9	20.0	27.0	34.1	41.1	17.6	24.7	31.7	38.8	45.8	22.3	29.4	36.4	43.5	50.5	Radius (m) 幅度
3	80.0															3
3.5	69.0	30.0														3.5
4	66.0	33.0				64.0					48.0					4
4.5	61.0	31.0				59.0	29.0				49.0					4.5
5	56.0	31.5	27.0			54.0	30.0				47.0					5
5.5	51.5	32.0	27.5			50.0	30.5				44.0	28.0				5.5
6	47.8	32.5	28.5	21.0		46.0	31.0	28.0			41.0	29.0				6
6.5	43.5	32.8	29.0	21.0		43.0	31.5	28.0			39.0	30.0				6.5
7	39.5	33.0	29.5	20.0		39.0	32.0	27.0			37.0	31.0	25.0			7
7.5	36.5	32.5	30.0	19.0		36.0	31.0	26.0	18.0		35.0	30.0	24.0			7.5
8	32.7	32.0	28.5	18.5	16.0	31.7	30.0	25.0	17.0		31.2	28.5	23.0			8
9	25.7	27.4	26.0	18.0	15.0	24.8	26.5	24.0	16.0	14.0	24.3	25.8	22.0	14.0		9
10	20.9	22.4	23.2	17.0	14.0	20.1	21.6	22.5	15.0	13.5	19.6	21.1	21.0	13.0	13.0	10
11		18.8	19.6	16.0	13.5	16.5	18.0	18.9	14.0	12.5	16.1	17.5	18.4	12.0	12.0	11
12		16.0	16.7	15.0	13.0	13.8	15.3	16.1	13.0	12.0	13.4	14.8	15.6	11.5	11.5	12
14		12.0	12.7	13.1	11.8	10.0	11.3	12.1	12.0	11.0	9.6	10.9	11.6	10.5	10.8	14
16		9.3	10.0	10.4	10.6		8.6	9.3	9.9	10.2	7.0	8.2	8.9	9.4	9.8	16
18			8.0	8.4	8.6		6.7	7.4	7.9	8.1	5.1	6.3	7.0	7.4	7.8	18
20			6.5	6.8	7.1		5.2	5.9	6.4	6.6		4.8	5.5	5.9	6.3	20
22			5.3	5.7	5.9		4.1	4.7	5.2	5.4		3.7	4.3	4.8	5.1	22
24			4.4	4.7	4.9			3.8	4.2	4.5		2.7	3.4	3.8	4.2	24
26				3.9	4.1			3.0	3.4	3.7		2.0	2.6	3.0	3.4	26
28				3.3	3.5			2.4	2.8	3.0			2.0	2.4	2.7	28
30				2.7	2.9				2.2	2.5			1.4	1.8	2.2	30
32					2.4				1.8	2.0				1.4	1.7	32
34					2.0				1.4	1.6					1.3	34
36					1.7				1.0	1.2						36
38					1.4											38
40																40
42																42
44																44
46																46
48																48
50																50
52																52
Rope rate 钢丝绳倍率	12	6	6	4	3	12	6	5	4	3	9	6	5	3	3	Rope rate 钢丝绳倍率
Cylinder I 一号缸	0	0%	0%	0%	0%	50%	50%	50%	50%	50%	100%	100%	100%	100%	100%	Cylinder I 一号缸
Cylinder II 二号缸	0	25%	50%	75%	100%	0%	25%	50%	75%	100%	0%	25%	50%	75%	100%	Cylinder II 二号缸

# Load Chart-Telescopic Boom

## 性能表 - 主臂

Unit: t

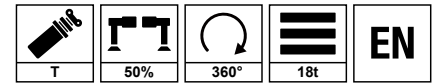


Radius (m) 幅度	12.9	20.0	27.0	34.1	41.1	17.6	24.7	31.7	38.8	45.8	22.3	29.4	36.4	43.5	50.5	Radius (m) 幅度
3	80.0															3
3.5	68.0	30.0														3.5
4	66.0	33.0				64.0					48.0					4
4.5	58.0	31.0				56.0	29.0				43.0					4.5
5	53.0	31.0	27.0			51.0	30.0				39.0					5
5.5	48.5	31.0	27.5			47.0	30.5				36.0	28.0				5.5
6	45.2	31.5	28.5	21.0		43.5	31.0	27.5			34.0	29.0				6
6.5	41.0	32.0	29.0	21.0		40.5	31.5	27.0			32.0	30.0				6.5
7	35.0	32.5	28.0	20.0		33.9	32.0	26.0			30.0	29.0	25.0			7
7.5	30.0	31.9	26.5	19.0		28.9	30.5	25.0	18.0		28.4	27.8	24.0			7.5
8	26.0	27.8	25.0	18.5	16.0	25.0	26.9	24.0	17.0		24.5	26.3	23.0			8
9	20.3	21.9	22.8	18.0	15.0	19.4	21.0	22.0	16.0	14.0	18.9	20.5	21.5	14.0		9
10	16.2	17.8	18.6	17.0	14.0	15.4	17.0	17.9	15.0	13.5	15.0	16.5	17.4	13.0	13.0	10
11		14.8	15.5	16.0	13.5	12.5	14.0	14.8	14.0	12.5	12.1	13.5	14.3	12.0	12.0	11
12		12.5	13.2	13.7	13.0	10.3	11.7	12.5	13.0	12.0	9.9	11.2	12.0	11.5	11.5	12
14		9.2	9.8	10.3	10.6	7.1	8.5	9.2	9.7	10.0	6.7	8.0	8.7	9.3	9.7	14
16		6.9	7.5	7.9	8.2		6.2	6.9	7.4	7.7	4.5	5.8	6.5	7.0	7.4	16
18			5.9	6.3	6.5		4.6	5.3	5.8	6.1	2.9	4.1	4.8	5.3	5.7	18
20			4.6	5.0	5.3		3.3	4.0	4.5	4.8		2.9	3.6	4.1	4.4	20
22			3.6	4.0	4.2		2.3	3.0	3.5	3.7		1.9	2.6	3.1	3.4	22
24			2.8	3.2	3.4			2.2	2.7	2.9			1.8	2.3	2.6	24
26				2.5	2.7			1.6	2.0	2.3				1.6	1.9	26
28				1.9	2.2			1.0	1.5	1.7					1.4	28
30				1.5	1.7					1.2						30
32					1.3											32
34					1.0											34
36																36
38																38
40																40
42																42
44																44
46																46
48																48
50																50
52																52
Rope rate 钢丝绳倍率	12	6	6	4	3	12	6	5	4	3	9	6	5	3	3	Rope rate 钢丝绳倍率
Cylinder I 一号缸	0	0%	0%	0%	0%	50%	50%	50%	50%	50%	100%	100%	100%	100%	100%	Cylinder I 一号缸
Cylinder II 二号缸	0	25%	50%	75%	100%	0%	25%	50%	75%	100%	0%	25%	50%	75%	100%	Cylinder II 二号缸

# Load Chart-Telescopic Boom

## 性能表 - 主臂

Unit: t

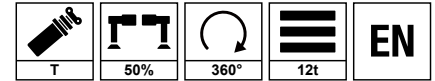


Radius (m) 幅度	12.9	20.0	27.0	34.1	41.1	17.6	24.7	31.7	38.8	45.8	22.3	29.4	36.4	43.5	50.5	Radius (m) 幅度
3	65.0					61.0										3
3.5	63.0	30.0				55.0										3.5
4	60.0	30.0				50.0					43.0					4
4.5	55.0	30.0				45.0	28.5				40.0					4.5
5	50.0	30.0	27.0			41.0	29.0				37.0					5
5.5	46.0	30.5	26.5			38.0	29.5				34.0	25.0				5.5
6	43.0	31.0	26.0	21.0		35.0	30.0	22.0			32.0	24.0				6
6.5	37.0	31.5	25.0	21.0		33.0	29.0	21.0			30.0	23.0				6.5
7	32.0	32.0	24.0	20.0		31.0	28.0	20.0			28.0	22.0	15.0			7
7.5	28.3	29.5	23.0	19.0		27.3	27.0	19.0	14.0		26.5	21.0	14.5			7.5
8	25.1	26.5	22.0	18.0	16.0	24.2	25.5	18.0	13.0		23.7	20.0	14.0			8
9	20.2	21.6	20.0	17.0	15.0	19.3	20.8	16.5	12.0	11.0	18.9	18.0	13.0	9.0		9
10	16.6	17.9	18.5	16.0	14.0	15.8	17.2	15.0	11.0	10.0	15.4	16.5	12.0	8.5	6.0	10
11		15.2	15.8	15.0	13.0	13.1	14.4	14.0	10.5	9.5	12.7	13.9	11.0	8.0	5.6	11
12		13.0	13.6	14.0	12.5	11.0	12.3	13.0	10.0	9.0	10.6	11.8	10.5	7.5	5.3	12
14		9.8	10.4	10.8	11.0	7.9	9.1	9.8	9.0	7.8	7.5	8.7	9.4	6.5	4.7	14
16		7.6	8.2	8.5	8.8		6.9	7.6	8.0	7.0	5.4	6.5	7.1	5.8	4.5	16
18			6.5	6.8	7.1		5.3	5.9	6.4	6.5	3.8	4.9	5.5	5.2	4.2	18
20			5.2	5.6	5.8		4.0	4.6	5.1	5.3		3.6	4.2	4.7	4.0	20
22			4.2	4.5	4.8			3.6	4.1	4.3		2.6	3.2	3.7	3.8	22
24			3.4	3.7	3.9			2.8	3.2	3.5		1.8	2.4	2.8	3.1	24
26				3.0	3.2			2.2	2.5	2.8		1.2	1.7	2.2	2.4	26
28				2.4	2.7			1.6	2.0	2.2			1.2	1.6	1.8	28
30				2.0	2.2				1.5	1.7				1.1	1.4	30
32					1.7				1.1	1.3						32
34					1.4											34
36					1.0											36
38					0.8											38
40																40
42																42
44																44
46																46
48																48
50																50
52																52
Rope rate 钢丝绳倍率	12	6	6	4	3	12	6	5	4	3	9	6	5	3	3	Rope rate 钢丝绳倍率
Cylinder I 一号缸	0	0%	0%	0%	0%	50%	50%	50%	50%	50%	100%	100%	100%	100%	100%	Cylinder I 一号缸
Cylinder II 二号缸	0	25%	50%	75%	100%	0%	25%	50%	75%	100%	0%	25%	50%	75%	100%	Cylinder II 二号缸

# Load Chart-Telescopic Boom

## 性能表 - 主臂

Unit: t



Radius (m) 幅度	12.9	20.0	27.0	34.1	41.1	17.6	24.7	31.7	38.8	45.8	22.3	29.4	36.4	43.5	50.5	Radius (m) 幅度
3	62.0					45.0										3
3.5	55.0	30.0				41.0										3.5
4	49.0	30.0				37.0					32.0					4
4.5	45.0	30.0				34.0	27.0				30.0					4.5
5	41.0	30.0	25.0			31.0	26.0				28.0					5
5.5	38.0	30.5	23.0			29.0	25.0				26.0	20.0				5.5
6	35.5	31.0	22.0	20.0		27.5	24.0	15.0			24.5	19.0				6
6.5	30.2	29.0	21.0	19.0		26.0	23.0	14.5			23.0	17.8				6.5
7	26.1	27.5	20.0	18.0		25.0	22.0	14.0			22.0	16.8	11.8			7
7.5	22.8	24.3	19.0	17.5		21.8	21.0	13.5	14.5		21.0	16.0	11.2			7.5
8	20.1	21.5	18.0	17.0	12.0	19.2	20.5	13.0	14.0		18.7	15.5	10.8			8
9	16.0	17.4	16.5	16.0	11.0	15.1	16.6	12.0	13.0	8.0	14.6	14.0	9.8	8.0		9
10	13.0	14.3	15.0	15.0	10.5	12.2	13.5	11.0	12.0	7.5	11.7	13.0	9.0	7.5	5.8	10
11		12.0	12.6	13.0	10.0	9.9	11.2	10.5	11.0	7.0	9.5	10.7	8.5	7.0	5.4	11
12		10.2	10.8	11.2	9.5	8.2	9.4	10.0	10.5	6.5	7.7	9.0	8.0	6.5	5.1	12
14		7.5	8.1	8.4	8.5	5.6	6.8	7.4	7.9	5.8	5.2	6.3	7.0	6.0	4.5	14
16		5.6	6.2	6.5	6.8		4.9	5.6	6.0	5.2	3.4	4.5	5.1	5.5	4.0	16
18			4.8	5.1	5.3		3.5	4.2	4.6	4.9	2.0	3.1	3.8	4.2	3.6	18
20			3.7	4.0	4.2		2.5	3.1	3.5	3.8		2.1	2.7	3.1	3.4	20
22			2.8	3.1	3.4			2.3	2.7	2.9			1.8	2.3	2.5	22
24			2.2	2.5	2.7			1.6	2.0	2.2				1.6	1.9	24
26				1.9	2.1				1.4	1.6					1.3	26
28				1.4	1.6					1.2						28
30				1.0	1.2											30
32																32
34																34
36																36
38																38
40																40
42																42
44																44
46																46
48																48
50																50
52																52
Rope rate 钢丝绳倍率	12	6	6	4	3	12	6	5	4	3	9	6	5	3	3	Rope rate 钢丝绳倍率
Cylinder I 一号缸	0	0%	0%	0%	0%	50%	50%	50%	50%	50%	100%	100%	100%	100%	100%	Cylinder I 一号缸
Cylinder II 二号缸	0	25%	50%	75%	100%	0%	25%	50%	75%	100%	0%	25%	50%	75%	100%	Cylinder II 二号缸

# Load Chart-Telescopic Boom

## 性能表 - 主臂

Unit: t



Radius (m) 幅度	12.9	20.0	27.0	34.1	41.1	17.6	24.7	31.7	38.8	45.8	22.3	29.4	36.4	43.5	50.5	Radius (m) 幅度
3	57.0					40.0										3
3.5	50.0	30.0				35.0										3.5
4	44.0	30.0				32.0					30.0					4
4.5	40.0	30.0				30.0	27.0				27.0					4.5
5	37.0	29.0	25.0			28.0	26.0				25.0					5
5.5	34.0	28.0	23.0			26.0	25.0				23.5	18.0				5.5
6	31.5	27.0	22.0	16.0		24.0	24.0	15.0			22.0	17.0				6
6.5	27.0	26.0	21.0	16.0		23.0	23.0	14.5			20.5	16.0				6.5
7	23.2	24.5	20.0	15.5		22.0	22.0	14.0			19.5	15.0	11.8			7
7.5	20.2	21.7	19.0	15.0		19.2	20.0	13.5	13.0		18.5	14.5	11.2			7.5
8	17.7	19.2	18.0	14.5	11.0	16.8	18.4	13.0	12.5		16.3	14.0	10.8			8
9	14.0	15.4	16.1	14.0	10.0	13.2	14.6	12.0	11.5	6.2	12.7	13.0	9.8	6.8		9
10	11.3	12.6	13.3	13.5	9.5	10.5	11.8	11.0	10.5	5.8	10.0	11.3	9.0	6.2	3.8	10
11		10.5	11.1	11.5	9.0	8.4	9.7	10.5	10.0	5.6	8.0	9.3	8.5	6.0	3.6	11
12		8.8	9.4	9.8	8.5	6.8	8.1	8.8	9.3	5.3	6.4	7.6	8.0	5.6	3.4	12
14		6.4	7.0	7.3	7.5	4.5	5.7	6.3	6.8	4.8	4.1	5.2	5.9	5.0	3.0	14
16		4.7	5.2	5.6	5.8		4.0	4.6	5.1	4.3	2.4	3.5	4.2	4.5	2.8	16
18			3.9	4.3	4.5		2.7	3.4	3.8	4.0		2.3	2.9	3.4	2.6	18
20			3.0	3.3	3.5		1.8	2.4	2.8	3.1			2.0	2.4	2.4	20
22			2.2	2.5	2.7		1.0	1.6	2.0	2.3				1.6	1.9	22
24			1.6	1.9	2.1				1.4	1.6					1.3	24
26				1.3	1.6					1.1						26
28					1.1											28
30																30
32																32
34																34
36																36
38																38
40																40
42																42
44																44
46																46
48																48
50																50
52																52
Rope rate 钢丝绳倍率	12	6	6	4	3	12	6	5	4	3	9	6	5	3	3	Rope rate 钢丝绳倍率
Cylinder I 一号缸	0	0%	0%	0%	0%	50%	50%	50%	50%	50%	100%	100%	100%	100%	100%	Cylinder I 一号缸
Cylinder II 二号缸	0	25%	50%	75%	100%	0%	25%	50%	75%	100%	0%	25%	50%	75%	100%	Cylinder II 二号缸

# Load Chart-Telescopic Boom

## 性能表 - 主臂

Unit: t

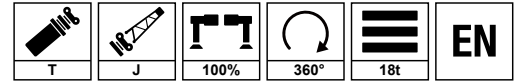


Radius (m) 幅度	12.9	20.0	27.0	34.1	41.1	17.6	24.7	31.7	38.8	45.8	22.3	29.4	36.4	43.5	50.5	Radius (m) 幅度
3	55.0					36.0										3
3.5	48.0	30.0				32.0										3.5
4	43.0	30.0				30.0					21.0					4
4.5	39.0	30.0				28.0	26.0				20.0					4.5
5	36.0	29.0	23.0			26.0	25.0				19.0					5
5.5	29.1	28.0	21.5			24.0	24.0				18.0	16.5				5.5
6	23.9	25.0	20.0	16.0		22.8	23.0	15.0			17.0	15.5				6
6.5	20.0	21.7	19.0	15.0		19.0	20.5	14.5			16.0	14.5				6.5
7	17.1	18.7	18.5	14.0		16.1	17.7	14.0			15.5	14.0	9.2			7
7.5	14.7	16.2	17.0	13.5		13.7	15.3	12.5	11.0		13.2	13.2	8.8			7.5
8	12.8	14.2	15.0	13.0	7.2	11.8	13.4	12.0	10.5		11.3	12.0	8.5			8
9	9.8	11.2	11.9	11.0	6.5	9.0	10.4	11.2	9.8	5.0	8.5	9.9	7.8	7.2		9
10	7.6	9.0	9.6	9.5	6.0	6.8	8.2	9.0	9.0	4.6	6.4	7.7	7.2	6.8	4.0	10
11		7.3	7.9	8.3	5.6	5.2	6.5	7.3	7.8	4.4	4.8	6.1	6.8	6.2	3.8	11
12		6.0	6.6	7.0	5.2	4.0	5.2	5.9	6.5	4.2	3.6	4.8	5.5	6.0	3.6	12
14		4.0	4.6	5.0	4.7	2.1	3.3	4.0	4.5	3.8		2.9	3.6	4.0	3.3	14
16		2.7	3.2	3.6	3.8		2.0	2.6	3.1	3.4			2.2	2.7	3.0	16
18			2.2	2.5	2.8			1.6	2.1	2.3				1.6	1.9	18
20			1.4	1.7	2.0					1.5						20
22					1.3											22
24					0.8											24
26																26
28																28
30																30
32																32
34																34
36																36
38																38
40																40
42																42
44																44
46																46
48																48
50																50
52																52
Rope rate 钢丝绳倍率	12	6	6	4	3	12	6	5	4	3	9	6	5	3	3	Rope rate 钢丝绳倍率
Cylinder I 一号缸	0	0%	0%	0%	0%	50%	50%	50%	50%	50%	100%	100%	100%	100%	100%	Cylinder I 一号缸
Cylinder II 二号缸	0	25%	50%	75%	100%	0%	25%	50%	75%	100%	0%	25%	50%	75%	100%	Cylinder II 二号缸

# Load Chart - Fixed Jib

## 性能表 - 副臂

Unit: t

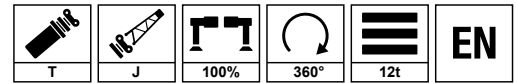


Boom angle 主臂仰角 (°)	50.5+10m			50.5+16m			Boom angle 主臂仰角 (°)
	0	15	30	0	15	30	
80	5.5	3.8	3.3	3.3	2.2	1.5	80
78	5.2	3.7	3.1	3.2	2.1	1.4	78
76	5.0	3.6	2.9	3.1	2.0	1.4	76
74	4.8	3.5	2.7	2.9	2.0	1.4	74
72	4.3	3.3	2.7	2.8	1.9	1.3	72
70	4.0	3.1	2.6	2.7	1.7	1.3	70
68	3.8	3	2.5	2.5	1.6	1.3	68
66	3.6	2.9	2.4	2.3	1.5	1.2	66
64	3.3	2.7	2.3	2.1	1.5	1.2	64
62	3.0	2.5	2.2	1.95	1.5	1.1	62
60	2.8	2.3	2.05	1.8	1.4	1.05	60
58	2.0	2.0	1.9	1.7	1.4	1.0	58
56	2.0	2.0	1.8	1.6	1.3	0.95	56
54	2.0	2.0	1.7	1.5	1.2	0.9	54
52	2.0	2.0	1.6	1.4	1.15	0.86	52
50	2.0	2.0	2.0	1.3	1.1	0.83	50
48	2.0	1.0	1.0	1.2	1.05	0.8	48
46	1.0	1.0	1.2	1.1	1.0	0.77	46
44	1.0	1.0	1.1	1.0	0.95	0.75	44
42	1.0	1.0	0.9	0.8	0.75	0.7	42
40	1.0	1.0	0.8	0.65	0.6	0.6	40
38	1.0	1.0	0.7				38

# Load Chart - Fixed Jib

## 性能表 - 副臂

Unit: t



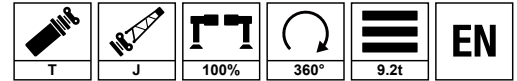
Boom angle 主臂仰角 (°)	50.5+10m			50.5+16m			Boom angle 主臂仰角 (°)
	0	15	30	0	15	30	
80	5.5	3.8	3.3	3.3	2.2	1.5	80
78	5.2	3.7	3.1	3.2	2.1	1.4	78
76	4.8	3.6	2.9	3.1	2.0	1.4	76
74	4.6	3.5	2.7	2.9	2.0	1.4	74
72	4.0	3.3	2.7	2.8	1.9	1.3	72
70	3.8	3.1	2.6	2.7	1.7	1.3	70
68	3.3	2.9	2.5	2.5	1.6	1.3	68
66	2.8	2.5	2.3	2.3	1.5	1.2	66
64	2.5	2.2	2.1	2.1	1.5	1.2	64
62	2.1	1.9	1.8	1.8	1.5	1.1	62
60	1.8	1.7	1.6	1.6	1.4	1.05	60
58	2.0	2.0	1.4	1.4	1.2	1.0	58
56	1.0	1.0	1.25	1.2	1.1	0.95	56
54	1.0	1.0	1.1	1.05	0.95	0.9	54
52	1.0	1.0	0.95	0.9	0.85	0.8	52
50	1.0	1.0	1.0	0.8	0.75	0.7	50
48	1.0	1.0	1.0	0.7	0.65	0.6	48
46	1.0	1.0	0.65	0.6	0.55	0.5	46
44	1.0	1.0	0.55	0.5	0.5		44
42	1.0	1.0					42
40	1.0						40
38							38
36							36



# Load Chart - Fixed Jib

## 性能表 - 副臂

Unit: t

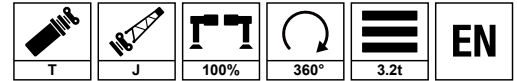


Boom angle 主臂仰角 (°)	50.5+10m			50.5+16m			Boom angle 主臂仰角 (°)
	0	15	30	0	15	30	
80	5.5	3.8	3.3	3.3	2.2	1.5	80
78	5.2	3.7	3.1	3.2	2.1	1.4	78
76	5.0	3.6	2.9	3.1	2.0	1.4	76
74	4.8	3.5	2.7	2.9	2.0	1.4	74
72	4.3	3.3	2.7	2.8	1.9	1.3	72
70	3.6	3.0	2.6	2.7	1.8	1.3	70
68	3.0	2.6	2.4	2.5	1.6	1.3	68
66	2.5	2.2	2.1	2.1	1.5	1.2	66
64	2.1	1.9	1.8	1.8	1.5	1.2	64
62	1.8	1.7	1.6	1.6	1.4	1.1	62
60	1.6	1.45	1.4	1.35	1.3	1.05	60
58	1.0	1.0	1.2	1.2	1.05	1.0	58
56	1.0	1.0	1.05	1.0	0.9	0.9	56
54	1.0	1.0	0.9	0.9	0.8	0.75	54
52	1.0	1.0	0.8	0.75	0.7	0.65	52
50	1.0	1.0	1.0	0.65	0.6	0.55	50
48	1.0	1.0	1.0	0.55	0.5	0.5	48
46	1.0	1.0	0.5				46
44							44
42							42
40							40
38							38
36							36

# Load Chart - Fixed Jib

## 性能表 - 副臂

Unit: t



Boom angle 主臂仰角 (°)	50.5+10m			50.5+16m			Boom angle 主臂仰角 (°)
	0	15	30	0	15	30	
80	5.2	3.8	3.3	3.3	2.2	1.5	80
78	5.0	3.6	3.1	3.2	2.1	1.4	78
76	4.6	3.5	2.8	3.0	2.0	1.4	76
74	4.2	3.2	2.6	2.8	1.8	1.4	74
72	3.2	2.8	2.4	2.5	1.7	1.3	72
70	2.6	2.3	2.1	2.3	1.6	1.3	70
68	2.2	1.9	1.8	1.9	1.5	1.3	68
66	1.8	1.6	1.5	1.5	1.3	1.2	66
64	1.5	1.35	1.25	1.3	1.1	1.0	64
62	1.2	1.1	1.05	1.05	0.9	0.85	62
60	1.0	0.9	0.9	0.85	0.75	0.7	60
58	1.0	1.0	0.75	0.7	0.65	0.6	58
56	1.0	1.0	0.6	0.55	0.5	0.5	56
54	1.0	1.0	0.5				54
52							52
50							50
48							48
46							46
44							44
42							42
40							40
38							38
36							36



## SANY GROUP CRANE BU

SANY Mobile Crane Industrial Park, No.168 Jinzhou Avenue, Jinzhou Development Zone, Changsha City,  
Hunan Province, P.R. China Zip 410600  
Consulting [sanycrane@sanygroup.com](mailto:sanycrane@sanygroup.com) (Crane BU) / [crd@sany.com.cn](mailto:crd@sany.com.cn) (IHQ)  
After-sales Service 0086-400 6098 318

Reminder:

Any change in the technical parameters and configuration due to product modification or upgrade may occur without prior notice.  
The machine in the picture may include additional equipment. This brochure is for reference only, and goods in kind shall prevail.  
Copyright at SANY. No part of this brochure may be copied or used for any purpose without written approval from SANY.

© Edited in January 2023

### 三一集团起重事业部

中国湖南长沙金洲开发区金洲大道 168 号 三一汽车起重机产业园 邮编: 410600  
咨询: [sanycrane@sanygroup.com](mailto:sanycrane@sanygroup.com) (起重事业部) / [crd@sany.com.cn](mailto:crd@sany.com.cn) (国际总部)  
海外售后服务: 0086-400 6098 318

温馨提示:

由于技术不断更新, 技术参数及配置如有更改, 恕不另行通知。图中机器可能包括附加设备, 本画册仅供参考, 以实物为准。  
版权为三一所有, 未经三一书面许可, 本画册任何内容不得被复制用于任何目的。

© 2023 年 1 月版

